



WARREN

Community Farm & Gardens
INFO SESSION

February 15, 2011

What is a Community Farm & Garden?

- A Community Garden is a shared space for gardening that is divided into separate allotments. These allotments are rented on a yearly basis by individuals and groups within that community.
- The individual gardeners adhere to an agreed upon set of rules and standards.
- Community gardens provide opportunities for social gatherings, beautification, education and recreation.
- Community gardens are inclusive and diverse. Gardeners may be of any cultural background, age, ability, and financial means.

Why does Warren need a Community Garden?

- The Warren Community Garden provides the people of Warren with access to open land and the educational resources needed to grow food in a way that is environmentally sustainable, affordable, and healthy.
- The Warren Community Garden provides residents across the socioeconomic spectrum with access to local, organically-grown foods.
- The Warren Community Garden promotes good land stewardship and agricultural sustainability.
- The Warren Community Garden provides residents with the opportunity to develop deeper and more meaningful relationships with their neighbors.

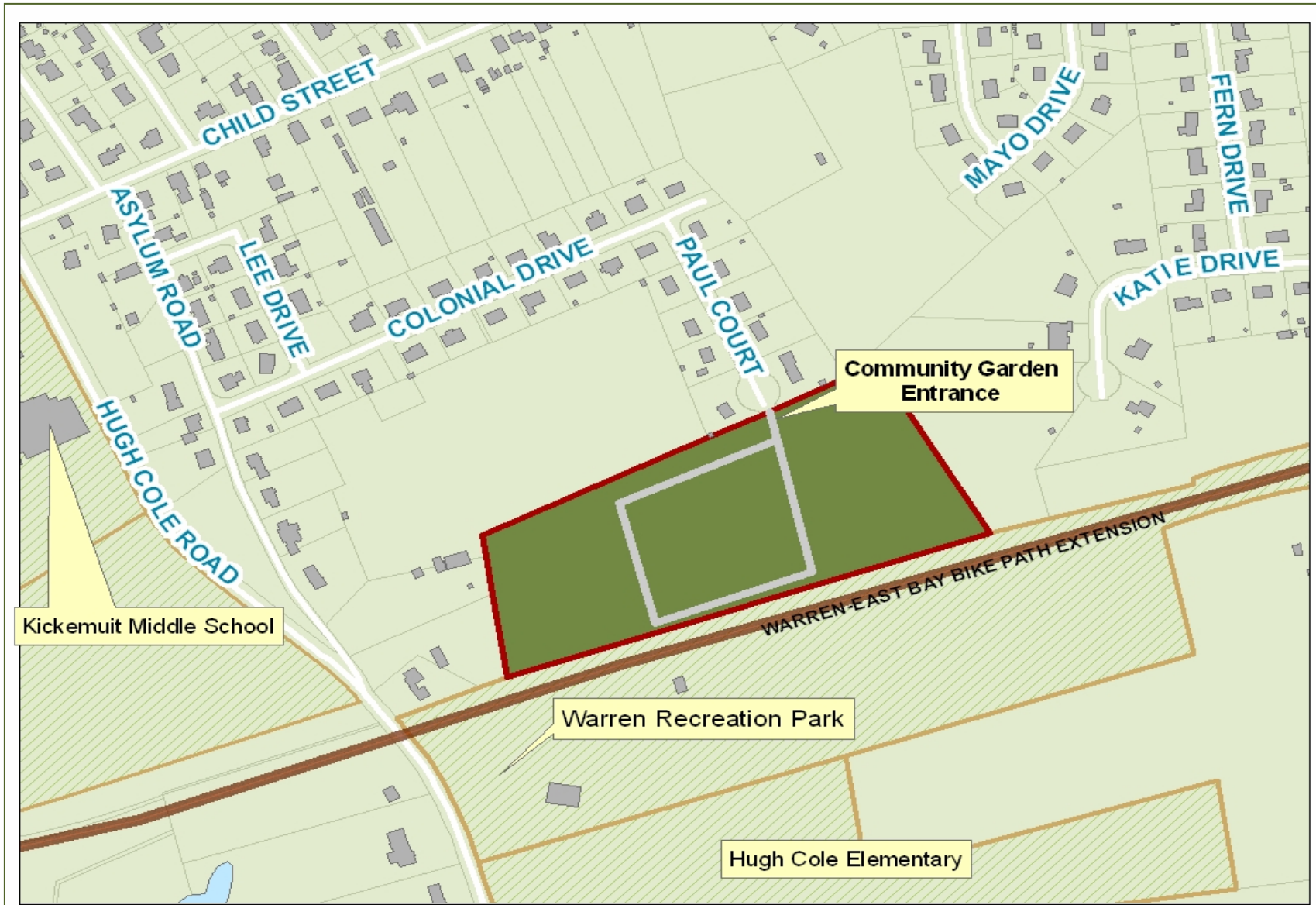
Who can garden at the Warren Community Farm and Gardens?

- Any Warren resident can rent a garden plot for the season.
- Beginners, amateurs, and professionals are all welcome.

The Farm and Garden will hold regular workshops covering a variety of gardening topics.

The Coordinator will be onsite Wednesdays from 4-6 pm to help gardeners. Appointments outside this time are available. Email Melissa Maia at warrencommunitygarden@gmail.com to set up a time and date.
- Gardening clubs, church groups, knitting circles—any group can rent a plot together and garden together.

Where in the world is Paul Court?



How big and how much?

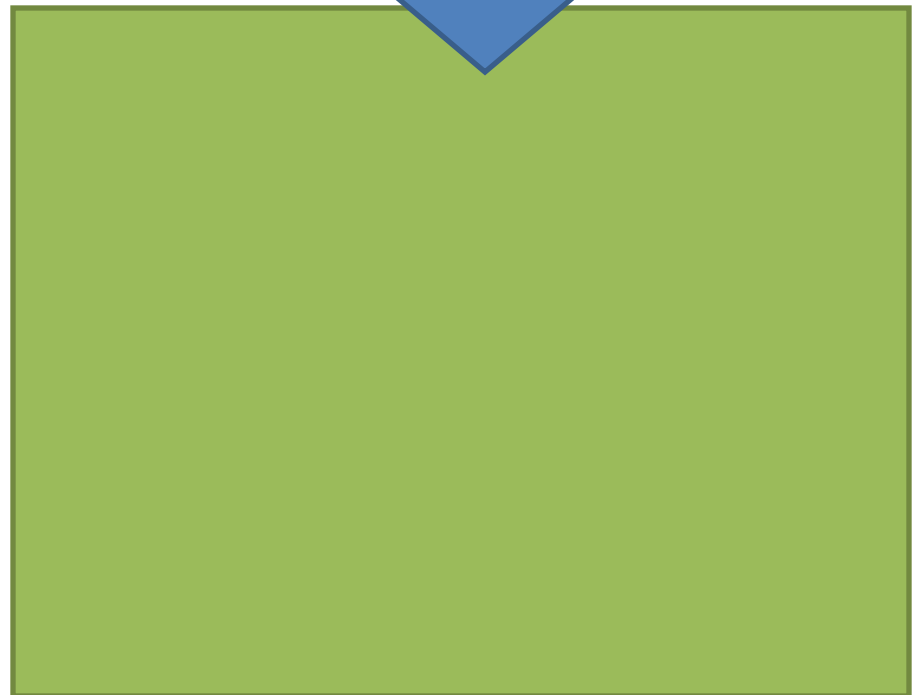
5 x 10 foot plot

\$35.00



10 x 20 foot plot

\$45.00



Be a good neighbor --

- >Do not harvest from other gardeners' plots.
 - >Do not smoke, drink alcohol, or use illegal substances
 - >Park in the garden spaces provided only.
- Do not park in front of homes near the garden.



Be kind to the land --

- >Do not use synthetic fertilizers, insecticides, pesticides and weed repellents .
- A good rule: if you are not sure, ask first!
- >Compost your spent plants, but not your weeds.
 - >Participate in the fall cleanup of the garden in late October. Pull up your stakes so that the land can be sown with rye to preserve the integrity of the land.

Be responsible--

- >Supervise your children at all times. Better yet, put them to work!
- >Leave your pets at home where they will be much more comfortable.

Be resourceful --

- >Bring your own supplies, tools, and plantings.
- >Use mulches such as straw, leaves, compost or buckwheat hulls to conserve water.

How can residents get more information about the Warren Community Farm and Gardens?

- Email the Garden Coordinator, Melissa Maia at warrencommunitygarden@gmail.com.
- Visit the “Warren Community Garden” on Facebook and receive regular updates on events and workshops. Make sure you “like” us.
- Visit the Town of Warren website and click on “Community Farm and Garden.”

